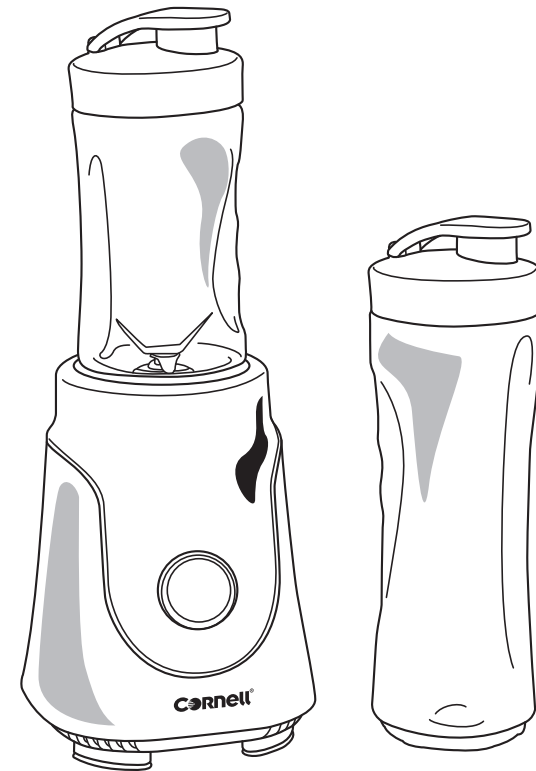


**CORnell®**

# User Manual



## Personal Blender

**CPB-E600G  
CPB-E600P  
CPB-E600B**

**CORnell®**

Marketed by:

**CORNELL SALES & SERVICE SDN BHD** (604369-P)

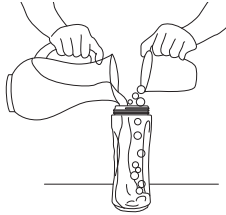
Lot 11B, Jalan 223, Section 51A,  
46100 Petaling Jaya,  
Selangor Darul Ehsan, Malaysia.

InfoLine: 1-800-881-770  
[www.cornellappliances.com](http://www.cornellappliances.com)

# OPERATION GUIDE

Clean blender according to the instructions in the “Cleaning and Maintenance” section.

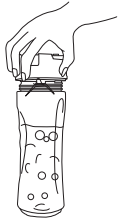
1. Fill the bottle with ingredients. Be sure not to fill ingredients above the max (300ml/600ml) marking.



5. Press and hold the switch on the base and the blender will start working. To stop the blender, release the switch.



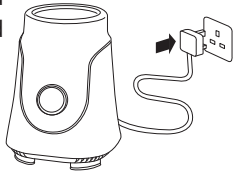
2. Fasten the blade assembly on the open end of the bottle.



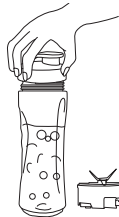
6. After the ingredients are fully blended, turn off the power before turning the bottle counterclockwise to take out the bottle from the base.



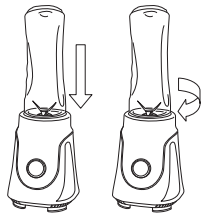
3. Place the blender base on a flat and sturdy surface and plug it into the power socket.



7. Replace the blade assembly with the drinking lid for takeout.



4. Turn the bottle upside down and line up arrow “▲” on the blade assembly to the arrow on the base. Place the bottle in the base by pressing and simply turn the bottle clockwise to lock it into the base.



# C O N T E N T S

**4** PRODUCT FEATURES

**4** PARTS IDENTIFICATION

**5** IMPORTANT SAFEGUARDS

**6-7** OPERATION GUIDE

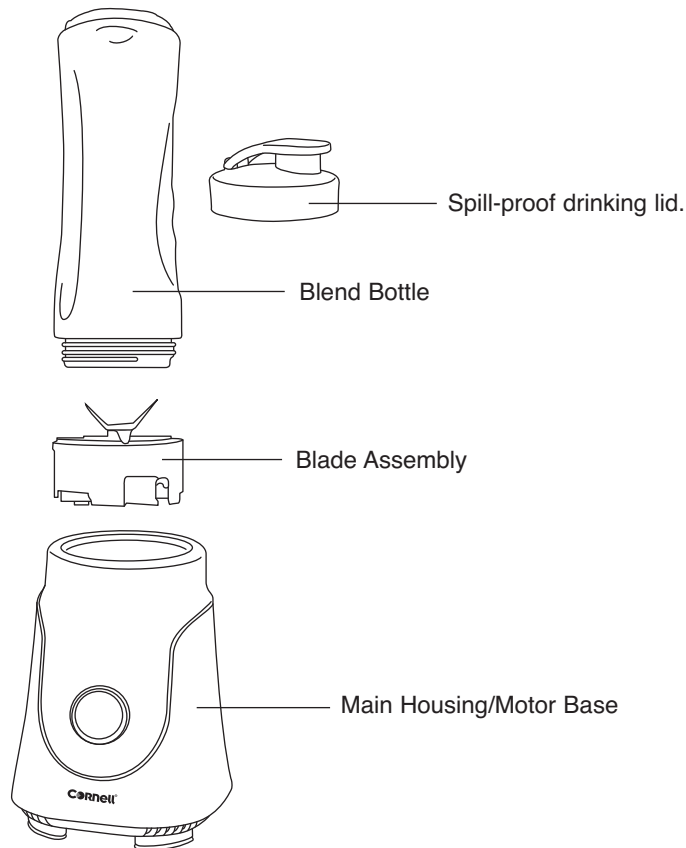
**7** CLEANING AND MAINTENANCE

Please read this manual before using the appliance and save it for future reference.

## PRODUCT FEATURES

1. Blend mixed fruits, vegetables & ice.
2. BPA -free blend bottle.
3. Spill-proof drinking lid.
4. Safety startup system

## PARTS IDENTIFICATION



## IMPORTANT SAFEGUARDS

When using electrical appliances, basic safety precautions must always be followed, including the following:

1. Please read through the instruction before using this appliance and keep this instruction manual in a safe place.
2. Connect the appliance only to an earthed mains safety socket. The voltage on the appliance rating label must correspond with that of the mains supply.
3. To protect against the risk of electrical shock, do not immerse the cord plug or motor base in the water or in any other liquids.
4. Do not let the power cord hang over the edge of the table or counter or touch on hot surfaces.
5. Never leave the appliance unattended when in use.
6. Close supervision is necessary when used by or near children.
7. The blade is sharp. Handle with care.
8. To avoid the risk of injury, never place the blade assembly on the base without the bottle properly attached.
9. Do not attempt to bypass the interlock system that powers the unit on.
10. Do not operate the appliance with a damaged cord or plug or after the appliance malfunctioned or is dropped or damaged in any manner. Return the appliance to an authorized after sales service center (refer to the warranty card).
11. Always operate on a flat and sturdy surface.
12. Do not use outdoors or for commercial purposes. This appliance is for household use only.
13. Unplug the blender when not in use, before taking off or putting on parts and before cleaning.

## OPERATION GUIDE

### NOTE:

1. Cut all firm fruits and vegetables into pieces no larger than 1.8cm to 2.5 cm.
2. Do not use the appliance to blend dough, mashed potatoes, meat etc.
3. To crush ice, use only ice cubes and no more than four ice cubes at a time. The size of the ice cubes must not exceed 2cm. Run for 2 seconds and rest for 2 seconds. Repeat the steps until the ice cubes are crushed to bits.
4. The blender has a safety startup system. The bottle must be installed on the base according to the correct directions for the blender to start safely.
5. Don't overload the bottle. If the motor stalls, turn the blender off immediately. Unplug the unit and let it cool for at least 10 minutes

## CLEANING AND MAINTENANCE

1. Before cleaning, unplug the appliance and detach the accessories.
2. Use a damp cloth to clean the exterior of the blender base. Do not immerse it in water or any other liquids.
3. All parts except for the blender motor base can be washed in water.
4. When not using for a long time, keep this appliance well at a ventilated place.

**CAUTION: The cutting edges of the blades are very sharp. Be extra careful while cleaning.**