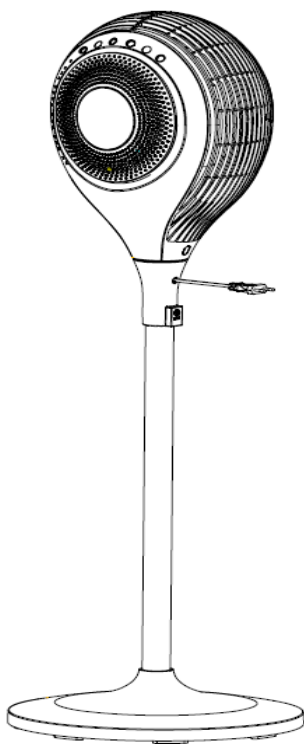


CORNELL®

User Manual



Tower Fan

CTF-PD68ECO

SAFETY REGULATION

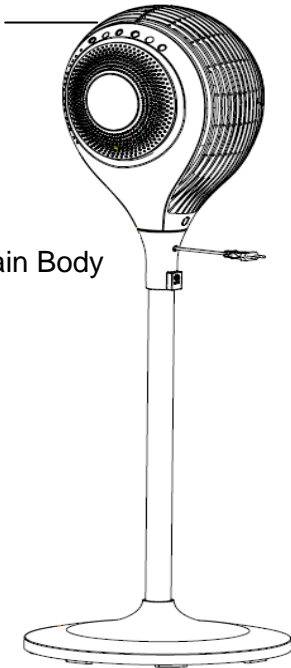
- Read all the instruction carefully. Keep this user manual for future reference.
- This appliance is not intended for use by persons (including children) with reduced physical, sensory or mental capabilities, or lack of experience and knowledge, unless they have been given supervision or instruction concerning the use of appliance by a person responsible for their safety.
- Use only original accessories supplied.
- The current voltage which indicates on the plate must correspond to your local voltage.
- The appliance should be used only on condition that the type of power supply corresponds to the marking label. Otherwise, it will not work or even be damaged.
- Never use the appliance inside the bath, under a shower or over a wash basin full of water.
- If the appliance falls into water, pull the power plug out from the power socket immediately.
- Never use the appliance unless it is fully assembled.
- Do not overload outlets or extension cords. It can result in fire or electric shock.
- Do not use the appliance if the power supply cord or plug has been damaged.
- Unplug from outlet when not in use, before putting on or taking off parts, and before cleaning.
- The use of accessory attachments not recommended by the appliance manufacturer may cause injuries.

- Do not immerse the cord, plug or appliance in water or other types of liquid and do not pour water onto it to avoid from fire, electrical shock or personal injury.
- To protect against risk of electrical shock, do not force any foreign objects such as pins and wires into any openings.

PARTS IDENTIFICATION

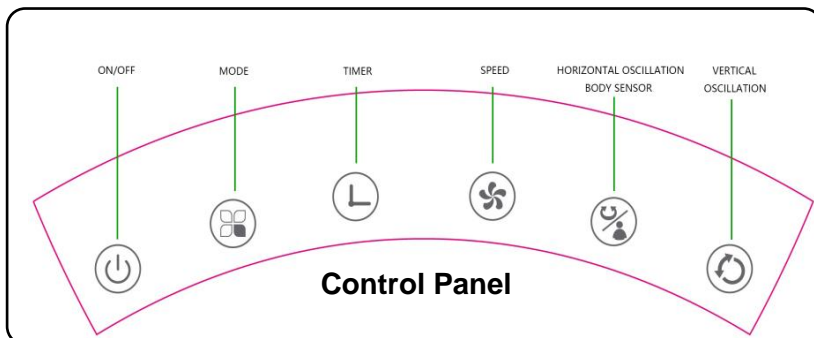
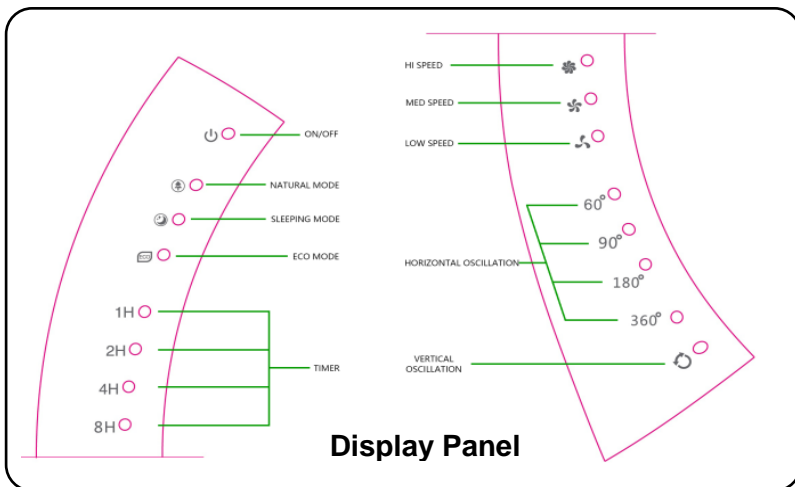
LED Display Panel

Main Body



Remote Control





SPECIFICATION

Model	CTF-PD68ECO
Voltage	220-240V~
Frequency	50Hz
Power	65W

OPERATING INSTRUCTIONS

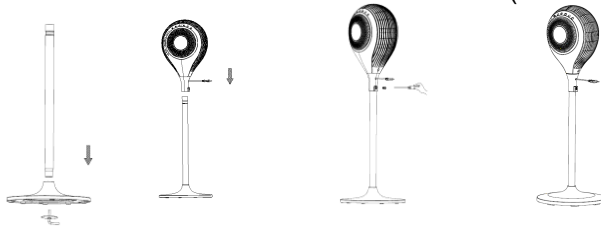
Before Using

- Please read these instructions carefully before using and keep them for future reference.
- Check your local main voltage whether it is the same as stated on the rating label.
- Before using for the first time, remove any protective films or stickers from the table fan.
- Ensure the power switch is at the “0” position.
- Always attach plug to appliance first, then plug cord into the wall outlet. To disconnect, turn OFF any control, then remove plug from wall outlet.

How to Assembly Tower Fan

Installation

1. Take out parts for assembling.
 - 2.1. Stick the column into the hole on base, and fix them tightly by screw. (Picture 1)
 - 2.2 Assemble the fan body onto the column tube (Picture 2)
 - 2.3 Fix the fan body & the column by screw as (Picture 3)
 - 2.4 Put the fan on the ground and power on, using the fan as the user manual instructions. (Picture 4)



How to Use Tower Fan

CONTROL PANEL:

“ON, OFF” button

Press the **ON** button once, the fan will start at low speed, normal style and normal mode.

Press the **OFF** button again will turn the fan off.

“Mode” button:

To select normal mode, natural mode, sleep mode and ECO mode:

NORMAL mode: unit operates in selected fan speed, High, Medium or Low.

NATURAL mode: unit operates according to computerized intervals of changing speeds.

SLEEP mode: unit operates according to computerized intervals of changing speeds

ECO mode: Under this mode, unit would adjust the wind speed upon the current temperature: when its $<25^{\circ}\text{C}$, the low speed; hi speed when $>29^{\circ}\text{C}$; med speed between $25^{\circ}\text{C} \sim 29^{\circ}\text{C}$

“TIMER” button

When the fan is in use, you can set the time to close the appliance. Press the **TIMER** button, the default time is 1h. You can press the timer buttons continually to set the timer off function between 1, 2, 4, 8 hours.

“SPEED” button:

To adjust fan speed, press once for medium speed, and twice for high speed.

Press the third time to return to low fan speed.

Horizontal Oscillation/Body sensor

When under working status, press this button to set horizontal oscillation angles in the rule of “0 degree--- no horizontal oscillation, 60°, 90°, 180°, 360°, body detecting, 0 degree...” The lights show accordingly.

Vertical Oscillation

The unit is set no vertical oscillation when power on. Users can Press the Vertical Oscillation button to set vertical oscillation under working status. The LED light display accordingly. Press again, the vertical oscillation stop. And circulate like this.

REMOTE CONTROL:



ON/OFF button

Press once to turn on the fan. Unit will start at Low fan speed.

Press will turn the fan off



Mode button

To select normal mode, natural mode, sleep mode and ECO mode:

To select normal mode, natural mode, sleep mode and ECO mode:

NORMAL mode: unit operates in selected fan speed, High, Medium or Low.

NATURAL mode: unit operates according to computerized intervals of changing speeds.

SLEEP mode: unit operates according to computerized intervals of changing speeds

ECO mode: Under this mode, unit would adjust the wind speed upon the current temperature: when its $<25^{\circ}\text{C}$, the low speed; hi speed when $>29^{\circ}\text{C}$; med speed between $25^{\circ}\text{C} \sim 29^{\circ}\text{C}$



Speed button

To adjust fan speed, press once for medium speed, and twice for high speed.

Press the third time to return to low fan speed.



Timer button

When the fan is in use, you can set the time to close the appliance. Press the **TIMER** button, The default time is 1h. You can press the timer buttons continually to set the timer off function between 1, 2, 4, 8 hours timing.



Horizontal Oscillation/Body sensor

When under working status, press this button to set horizontal oscillation angles in the rule of “0 degree--- no horizontal oscillation, 60°, 90°, 180°, 360°, body detecting, 0 degree...” The lights show accordingly.



Vertical Oscillation

The unit is set no vertical oscillation when power on. Users can Press the Vertical Oscillation button to set vertical oscillation under working status. The LED light display accordingly. Press again, the vertical oscillation stop. And circulate like this.

CARE AND CLEANING

- Always unplug the product from the wall socket and shut down completely prior to cleaning.
- Do not use abrasive sponge, scouring pads or stiff brush to clean the appliance.
- Please be cautious when cleaning the product near to the heater housing area.
- Use only damp cloth to wipe the exterior surfaces of the unit. Do not immerse the main body in water.
- Do not allow the electrical components to be exposed to water.



Marketed by:

CORNELL SALES & SERVICE SDN BHD (604369-P)

Lot 11B, Jalan 223, Section 51A,
46100 Petaling Jaya,
Selangor Darul Ehsan, Malaysia.

InfoLine: 1-800-881-770
www.cornellappliances.com